



禾瑞亞科技股份有限公司  
eGalax\_eMPIA Technology Inc.

客戶名稱：萬達科技

<h1>規 格 書</h1> <p>(SPECIFICATION SHEET)</p>
---

品名(Part Name):	Projected Capacitive Touch Control Board
客戶料號 (Client Part No.)	
禾瑞亞料號 (EETI Part No.)	ETP-MB-EXC203822UDG

研發/工程  
R&D/ENG.

採購  
Procurement/Buyer

客戶簽認

Approved by: \_\_\_\_\_

Pages	Edition	Date	Contacts
05	01	12/30/2009	Pandy Wu



禾瑞亞科技股份有限公司  
eGalax\_eMPIA Technology Inc.

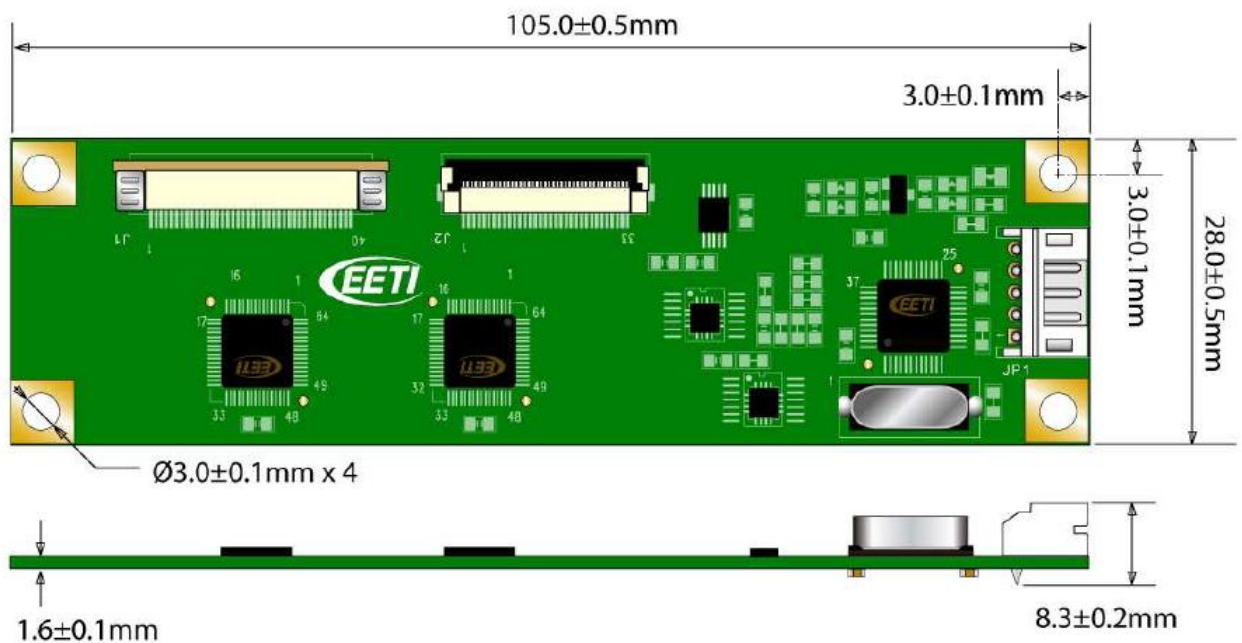
eGalax\_eMPIA launched touch control board for Projected Capacitive Touchscreen (PCAP/PCT) touch technology. This touch panel controller provides the optimistic performance of your projected capacitive touch panels. It communicates with PC system directly through USB connector. You can see how superior the design is in sensitivity 、accuracy and friendly operation.

The EXC7200-SG41 is a MCU based integrated system controller chip for capacitive touchscreen. Working with EETI's EX5404-EG41 for Projected Capacitive Touchscreen (PCAP/PCT) touch technology; it is specified for 3.3V operation over the industrial temperature range (-40°C to +80°C). EXC7200-SG41 provides 48 pins TQFP package. It works with EETI's extension slave ASIC for Projected capacitive touchscreen. This chip design is scableable for different size, numbers of sensing channels of projected capacitive sensors. This main chip can work with multiple slave ASICs to support bigger size of sensor.

EETI's vision is to be effective responses to the changing demands and driving market leadership. Through a combination of reliable product, cost efficiency and enhanced quality of service, we establish long-term strategic partnership with our customer and maximize the potential of profitable growth together. Delivering a most satisfying product and service to customers is an essential business value that EETI holds. Every day, thousands of people benefits from the convenience brought by communication technology and HMI / touch technology from our video and touch panel divisions.

OS	Version	Interfaces
<b>Windows</b>	Windows 7, Vista, XP/2000, ME/98	RS232/USB
	Windows XP Tablet PC edition	
	Windows CE 2.12/3.0/4.0/5.0/6.0	
	Windows Embedded XP	
<b>Windows</b>	Windows NT4, Windows 95	RS232
<b>Linux</b>	Support kernel 2.4.x / 2.6.x with XFree 4.x / xorg 6.7 to 7.5 ( Up to X server 1.6.x ) The new Linux public driver supports most of the Linux distributions 32/64 versions, including: CentOS, Debian, Fedora, Gentoo, Mandrake (Mandriva), Red Hat, Ubuntu(Xubuntu), Slackware, SuSE(open SuSE) etc.	RS232/USB (up to Kernel 2.6.x)
	Android 2.2 – Google Moblin V2 – Intel	RS232/USB

**Controller:**





禾瑞亞科技股份有限公司  
eGalax\_eMPIA Technology Inc.

## Specifications:

<b><i>USB Type Controller</i></b>	
Circuit Board Dimension	105mm x 28mm
Power Requirements	D.C. +5V (100mA typical, 50mV peak to peak maximum ripple and noise)
Operating Temperature	-25 to 80 °C
Storage Temperature	-55 to 150 °C
Relative Humidity	95% at 60 °C
Interface	USB: 1.1 Full Speed (12Mbps)
Resolution	2048×2048 resolution
Report rate	USB: Max. 120 points/sec
Response time	Max. 25 ms
Attached Cable	USB: 180cm shielded cable with USB-A connector

## USB Interface

